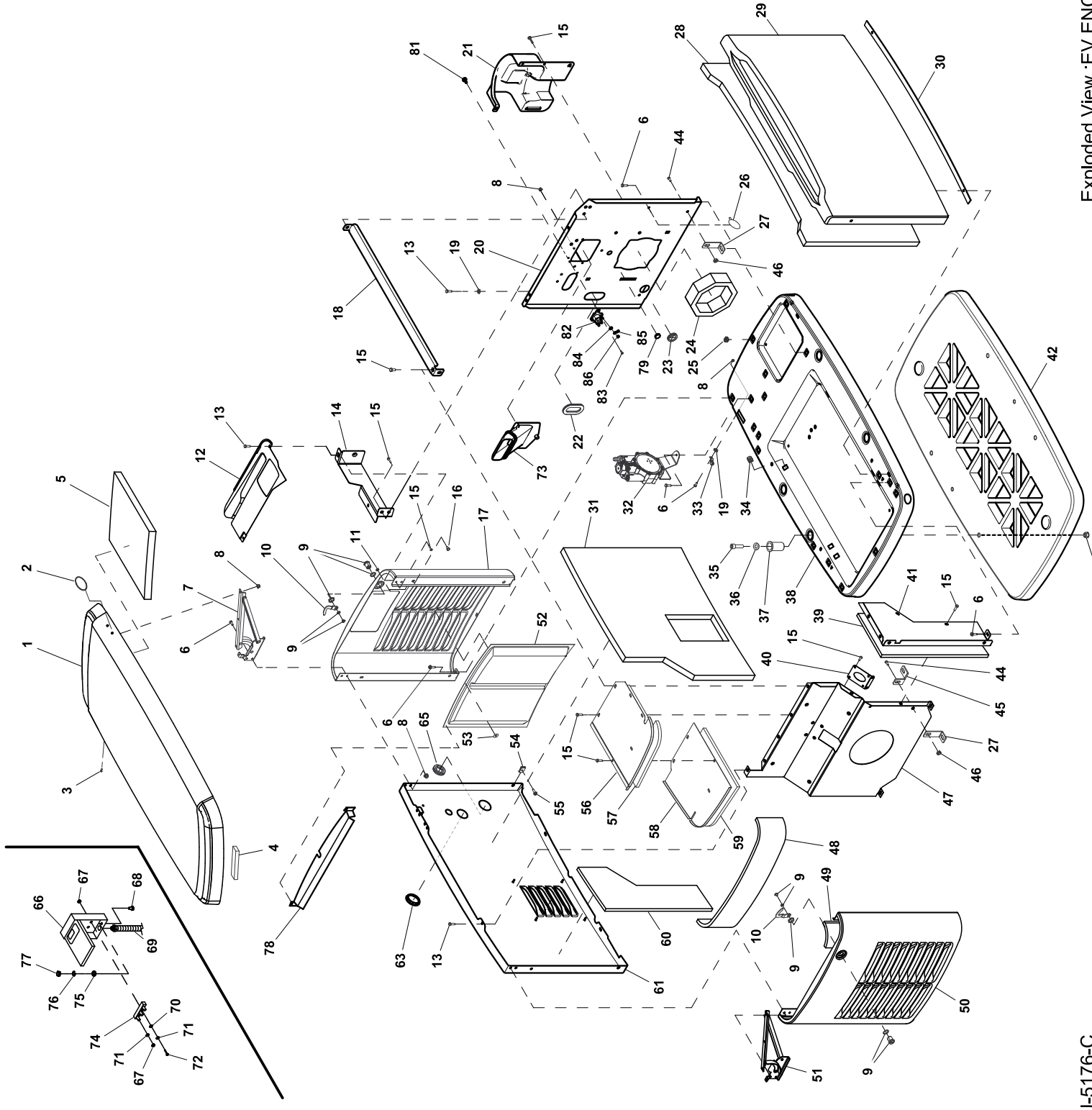


GROUP EV

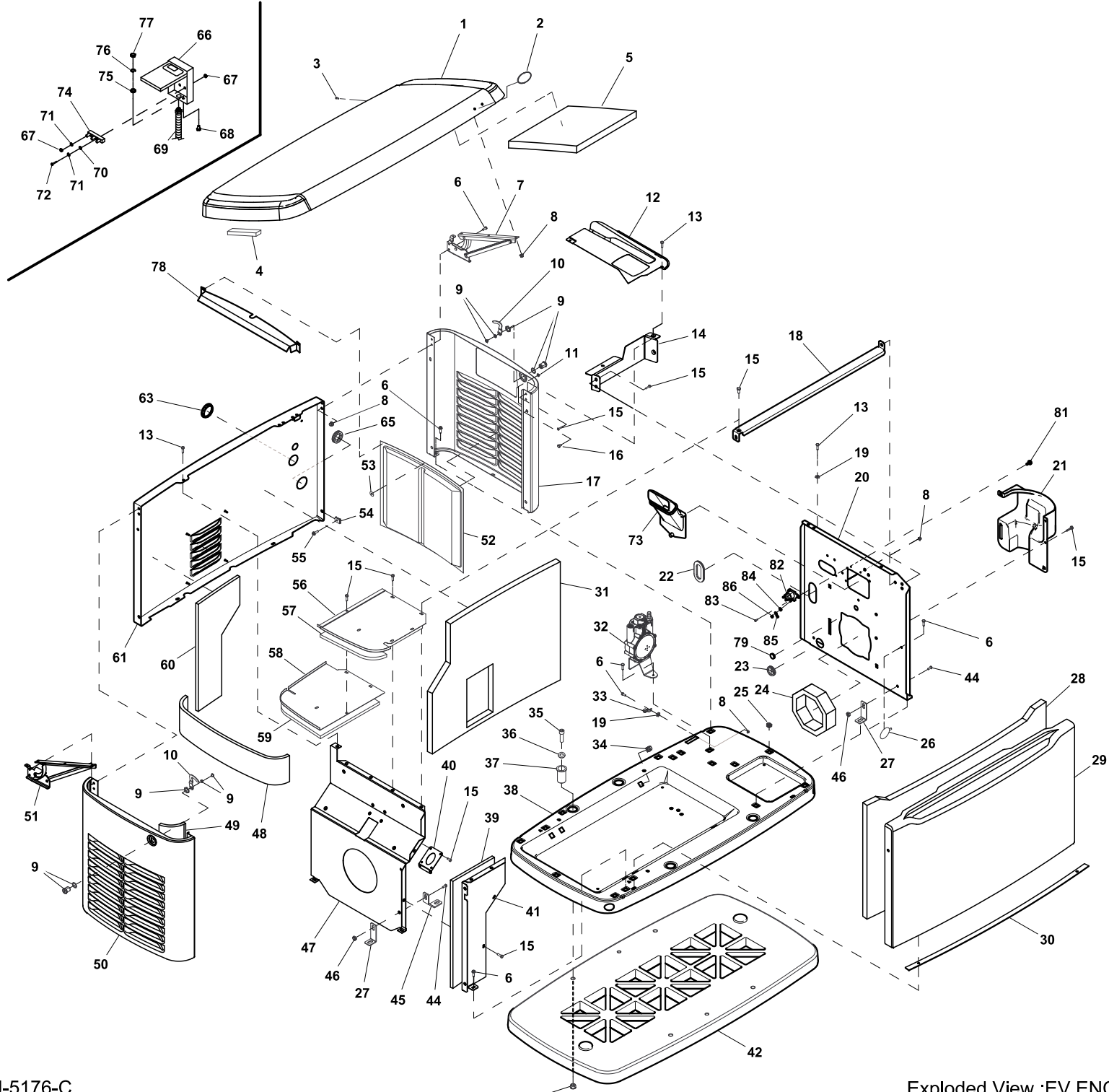


ITEM PART QTY. DESCRIPTION

1	0J7633A	1	ROOF ASSY GALV BISQUE
	0J7633E	1	ROOF ASSY GALV GREY
	0J7633B	1	ROOF ASSY ALUMINUM GREY
	0J7633D	1	ROOF ASSY ALUMINUM BISQUE
2	0G8160	1	BADGE HOLDER - OVAL
3	0G8131	1	PLUG 6.35 BLACK
4	0J7444	10.5 FT.	GASKET, EXTRUDED TRIM
5	0G7774A	3	FOAM, ENCLOSURE ROOF 1.00" THK
6	0C8566	20	SCREW HHFC M6-1.0 X 20 G8.8 (8-11 KW)
	0C8566	21	SCREW HHFC M6-1.0 X 20 G8.8
7	0J7098B	1	HINGE ASSY INTAKE END
8	0D3700	9	NUT FLANGE M6-1.0 NYLOK (11-20 KW)
	0D3700	11	NUT FLANGE M6-1.0 NYLOK (8 KW)
9	0G6624	2	1/4 TURN LOCKING LATCH
10	0G6626	2	1/4 TURN LATCH PAWL
11	052857	2	NUT TOP LOCK FL M6-1.0
12	0J8412B	1	CONTROLLER FACIA
	0J8412A	1	CONTROLLER FACIA (8-11 KW)
13	0G4933B	5	SCREW SWT 1/4-20 X 5/8
14	0H6914	1	BRACKET CTRL PNL FRONT (8-11 KW)
	0H6915	1	BRACKET CTRL PNL FRONT (13-20 KW)
15	090388	23	SCREW HHTT M6-1.0 X 12 ZINC
16	0G9386	2	SPACER DOOR
17	0J7064A	1	END PANEL, INTAKE
18	0H7194	1	CROSS SUPPORT HSB (8-11 KW)
	0H7195	1	CROSS SUPPORT HSB(13-20 KW)
19	0A1658	2	WASHER LOCK SPECIAL 1/4"
20	0J6873A	1	PL ENG DIVIDER W/START 410 HSB (8 KW)
	0J9483	1	PANEL ENGINE DIVIDER HSB (11 KW)
	0J6871A	1	PANEL ENGINE DIVIDER HSB (13-20 KW)
21	0G8287	1	INTAKE BAFFLE
22	0D3472	2	GROMMET OVAL 31.75 X 50.8
23	0E1330	1	GROMMET, 38.1 DIA. CROSS SLIT
24	0G7880	1	FOAM DUCT, ENGINE DIVIDER (8 KW)
	0F8434	1	FOAM DUCT, ENGINE DIVIDER (11 KW)
	0F8847	1	FOAM DUCT, ENGINE DIVIDER
25	0G7225	17	PANEL CLIP, M6-1.00 EXPANSION
26	0G0132	1	PUSHBUTTON WIRE TIE
27	0H8713	4	BRACKET EXH PNL (17 KW ALUM)
	0H8003	2	BRACKET EXH PNL (20 KW)
28	0G7779	1	FOAM, FRONT PANEL
29	0G9377A	1	ENCLOSURE FRONT PANEL
30	0G7890	1	GASKET, HSB DOOR SEAL
31	0J6895	1	FOAM, BACK PANEL
32	0G7622G	1	ASSY REGULATOR (8-11 KW)
	0J9045	1	ASSY PRESSURE STABILIZER REG (13-17 KW)
	0J8312	1	ASSY PRESSURE STABILIZER REG
33	055414	1	LUG SLDLSS #2-#8 X 17/64 CU
34	0G7225A	6	PANEL CLIP - 5/16-18 EXPANSION
35	0H1958	4	SCREW SHC 3/8-16 X1.25 W/PATCH
36	022131	4	WASHER FLAT 3/8-M10 ZINC
37	0G7786A	4	BUSHING, HSB ENCLOSURE BASE
38	0J7706	1	ENCLOSURE, BASE
39	0G7843	1	FOAM, FRONT EXHAUST SHIELD (13-17 KW)
	0G7849	1	FOAM, FRONT EXHST SHIELD (8, 11, 20 KW)
40	0J6184A	1	GASKET EXHAUST (8 KW)
	0J6184	1	GASKET EXHAUST (11 KW)
	0J7546A	1	GASKET EXHAUST (13-17 KW)
	0J7546B	1	GASKET EXHAUST (20 KW)

ITEM PART QTY. DESCRIPTION

41	0G6623	1	FRONT EXHAUST SHIELD (13-17 KW)
	0G7421	1	FRONT EXHAUST SHIELD (8, 11, 20 KW)
42	0G6619A	1	PAD MTG BASE W/HEX POCKETS
43	022241	4	NUT HEX 3/8-16 STEEL
44	0C8563	4	SCREW HHFC M6-1.0 X 12 G8.8 (17 KW ALUM, 20 KW)
45	0H8713	2	BRACKET L HSB DIVIDER PNL (20 KW)
46	0E8388	4	NUT HEX FL WHIZ M6-1.0 (17 KW ALUM, 20 KW)
47	0K3340D	1	EXHST DVDR PNL (8-10 KW)
	0K3340B	1	PANEL, EXHAUST DIVIDER (17 KW ALUMINUM)
	0K3340C	1	PANEL, EXHAUST DIVIDER (20 KW)
48	0G7775	1	FOAM, EXHAUST END PANEL
49	0G7775A	2	FOAM, EXHAUST END PANEL SIDES
50	0J7064B	1	ENCL END PANEL, EXHAUST SIDE
51	0J7098A	1	HINGE ASSY EXHAUST END
52	0G7258	2	SCREEN - HSB LOUVERS
53	0G8166	16	WASHER SELF LOCKING- .106 STUD
54	0G7252	2	CLIP U M6-1.0
55	0G1705	2	SCREW HHFC M6-1.0 X 14 G8.8
56	0G6812	1	COVER, FRONT EXHAUST ENCLOSURE
57	0G7778	1	FOAM, TOP FRONT EXHAUST COVER
58	0G6811	1	COVER, BACK EXHAUST ENCLOSURE
59	0G7776	1	FOAM, TOP BACK EXHAUST COVER
60	0G7842	1	FOAM, BACK PANEL, MUFFLER COMP
61	0J6994	1	ENCL BACK PNL HSB
62			
63	0J9137	1	PLUG STEEL 1.750
64			
65	0J7724	1	GROMMET FUEL LINE 3/4"
66	0H1536	1	BOX ASSEMBLY-CUSTOMER CONN
67	022158	5	HEX NUT #10-32STEEL
68	047411	1	SCREW HHC M6-1.0 X 16 C8.8
69	0K1577	1	HARN GEN-EXT CONBOX (8-11 KW)
	0K1578	1	HARN GEN-EXT CONBOX (13-17 KW)
70	051713	2	WASHER FLAT M5
71	022152	5	WASHER LOCK #10
72	036937	2	SCREW PPHM #10-32 X 1
73	0J6878	1	SNORKEL ENGINE AIR INTAKE
74	0C8911	1	POWER BLOCK
75	026850	1	WASHER LOCK EXT 1/4 STL
76	022097	1	WASHER LOCK M6-1/4
	022097	3	WASHER LOCK M6-1/4
77	049813	1	NUT HEX M6-1.0 G8 CLEAR ZINC
78	0J7223	1	DEFLECTOR
79	0E1534	1	PLUG PLASTIC 0.687"
80			
81	0G7717	3	SCREW REDUCED HH HI-LO M6 X 10MM (8 KW)
82	086729	1	CONTACTOR, STARTER SOLENOID (8 KW)
83	043116	2	SCREW HHC M6-1.0 X 12 G8.8 (8 KW)
84	022097	2	WASHER LOCK M6-1/4 (8 KW)
85	0742600179	1	WIRE ASSY SC TO SM 08 HSB (8 KW)
86	022127	2	NUT HEX 1/4-20 STEEL (8 KW)



ITEM PART QTY. DESCRIPTION

1	0J7633A	1	ROOF ASSY GALV BISQUE
	0J7633E	1	ROOF ASSY GALV GREY
	0J7633B	1	ROOF ASSY ALUMINUM GREY
	0J7633D	1	ROOF ASSY ALUMINUM BISQUE
2	0G8160	1	BADGE HOLDER - OVAL
3	0G8131	1	PLUG 6.35 BLACK
4	0J7444	10.5 FT.	GASKET, EXTRUDED TRIM
5	0G7774A	3	FOAM, ENCLOSURE ROOF 1.00" THK
6	0C8566	20	SCREW HHFC M6-1.0 X 20 G8.8 (8-11 KW)
	0C8566	21	SCREW HHFC M6-1.0 X 20 G8.8
7	0J7098B	1	HINGE ASSY INTAKE END
8	0D3700	9	NUT FLANGE M6-1.0 NYLOK (11-20 KW)
	0D3700	11	NUT FLANGE M6-1.0 NYLOK (8 KW)
9	0G6624	2	1/4 TURN LOCKING LATCH
10	0G6626	2	1/4 TURN LATCH PAWL
11	052857	2	NUT TOP LOCK FL M6-1.0
12	0J8412B	1	CONTROLLER FACIA
	0J8412A	1	CONTROLLER FACIA (8-11 KW)
13	0G4933B	5	SCREW SWT 1/4-20 X 5/8
14	0H6914	1	BRACKET CTRL PNL FRONT (8-11 KW)
	0H6915	1	BRACKET CTRL PNL FRONT (13-20 KW)
15	090388	23	SCREW HHTT M6-1.0 X 12 ZINC
16	0G9386	2	SPACER DOOR
17	0J7064A	1	END PANEL, INTAKE
18	0H7194	1	CROSS SUPPORT HSB (8-11 KW)
	0H7195	1	CROSS SUPPORT HSB(13-20 KW)
19	0A1658	2	WASHER LOCK SPECIAL 1/4"
20	0J6873A	1	PL ENG DIVIDER W/START 410 HSB (8 KW)
	0J9483	1	PANEL ENGINE DIVIDER HSB (11 KW)
	0J6871A	1	PANEL ENGINE DIVIDER HSB (13-20 KW)
21	0G8287	1	INTAKE BAFFLE
22	0D3472	2	GROMMET OVAL 31.75 X 50.8
23	0E1330	1	GROMMET, 38.1 DIA. CROSS SLIT
24	0G7880	1	FOAM DUCT, ENGINE DIVIDER (8 KW)
	0F8434	1	FOAM DUCT, ENGINE DIVIDER (11 KW)
	0F8847	1	FOAM DUCT, ENGINE DIVIDER
25	0G7225	17	PANEL CLIP, M6-1.00 EXPANSION
26	0G0132	1	PUSHBUTTON WIRE TIE
27	0H8713	4	BRACKET EXH PNL (17 KW ALUM)
	0H8003	2	BRACKET EXH PNL (20 KW)
28	0G7779	1	FOAM, FRONT PANEL
29	0G9377A	1	ENCLOSURE FRONT PANEL
30	0G7890	1	GASKET, HSB DOOR SEAL
31	0J6895	1	FOAM, BACK PANEL
32	0G7622G	1	ASSY REGULATOR (8-11 KW)
	0J9045	1	ASSY PRESSURE STABILIZER REG (13-17 KW)
	0J8312	1	ASSY PRESSURE STABILIZER REG
33	055414	1	LUG SLDLSS #2-#8 X 17/64 CU
34	0G7225A	6	PANEL CLIP - 5/16-18 EXPANSION
35	0H1958	4	SCREW SHC 3/8-16 X1.25 W/PATCH
36	022131	4	WASHER FLAT 3/8-M10 ZINC
37	0G7786A	4	BUSHING, HSB ENCLOSURE BASE
38	0J7706	1	ENCLOSURE, BASE
39	0G7843	1	FOAM, FRONT EXHAUST SHIELD (13-17 KW)
	0G7849	1	FOAM, FRONT EXHST SHIELD (8, 11, 20 KW)
40	0J6184A	1	GASKET EXHAUST (8 KW)
	0J6184	1	GASKET EXHAUST (11 KW)
	0J7546A	1	GASKET EXHAUST (13-17 KW)
	0J7546B	1	GASKET EXHAUST (20 KW)

ITEM PART QTY. DESCRIPTION

41	0G6623	1	FRONT EXHAUST SHIELD (13-17 KW)
	0G7421	1	FRONT EXHAUST SHIELD (8, 11, 20 KW)
42	0G6619A	1	PAD MTG BASE W/HEX POCKETS
43	022241	4	NUT HEX 3/8-16 STEEL
44	0C8563	4	SCREW HHFC M6-1.0 X 12 G8.8 (17 KW ALUM, 20 KW)
45	0H8713	2	BRACKET L HSB DIVIDER PNL (20 KW)
46	0E8388	4	NUT HEX FL WHIZ M6-1.0 (17 KW ALUM, 20 KW)
47	0K3340D	1	EXHST DVDR PNL (8-10 KW)
	0K3340B	1	PANEL, EXHAUST DIVIDER (17 KW ALUMINUM)
	0K3340C	1	PANEL, EXHAUST DIVIDER (20 KW)
48	0G7775	1	FOAM, EXHAUST END PANEL
49	0G7775A	2	FOAM, EXHAUST END PANEL SIDES
50	0J7064B	1	ENCL END PANEL, EXHAUST SIDE
51	0J7098A	1	HINGE ASSY EXHAUST END
52	0G7258	2	SCREEN - HSB LOUVERS
53	0G8166	16	WASHER SELF LOCKING- .106 STUD
54	0G7252	2	CLIP U M6-1.0
55	0G1705	2	SCREW HHFC M6-1.0 X 14 G8.8
56	0G6812	1	COVER, FRONT EXHAUST ENCLOSURE
57	0G7778	1	FOAM, TOP FRONT EXHAUST COVER
58	0G6811	1	COVER, BACK EXHAUST ENCLOSURE
59	0G7776	1	FOAM, TOP BACK EXHAUST COVER
60	0G7842	1	FOAM, BACK PANEL, MUFFLER COMP
61	0J6994	1	ENCL BACK PNL HSB
62			
63	0J9137	1	PLUG STEEL 1.750
64			
65	0J7724	1	GROMMET FUEL LINE 3/4"
66	0H1536	1	BOX ASSEMBLY-CUSTOMER CONN
67	022158	5	HEX NUT #10-32STEEL
68	047411	1	SCREW HHC M6-1.0 X 16 C8.8
69	0K1577	1	HARN GEN-EXT CONBOX (8-11 KW)
	0K1578	1	HARN GEN-EXT CONBOX (13-17 KW)
70	051713	2	WASHER FLAT M5
71	022152	5	WASHER LOCK #10
72	036937	2	SCREW PPHM #10-32 X 1
73	0J6878	1	SNORKEL ENGINE AIR INTAKE
74	0C8911	1	POWER BLOCK
75	026850	1	WASHER LOCK EXT 1/4 STL
76	022097	1	WASHER LOCK M6-1/4
	022097	3	WASHER LOCK M6-1/4
77	049813	1	NUT HEX M6-1.0 G8 CLEAR ZINC
78	0J7223	1	DEFLECTOR
79	0E1534	1	PLUG PLASTIC 0.687"
80			
81	0G7717	3	SCREW REDUCED HH HI-LO M6 X 10MM (8 KW)
82	086729	1	CONTACTOR, STARTER SOLENOID (8 KW)
83	043116	2	SCREW HHC M6-1.0 X 12 G8.8 (8 KW)
84	022097	2	WASHER LOCK M6-1/4 (8 KW)
85	0742600179	1	WIRE ASSY SC TO SM 08 HSB (8 KW)
86	022127	2	NUT HEX 1/4-20 STEEL (8 KW)